

# Type YSF-3, 4 Safety Valve (Full Bore Type) Steam Boiler Pressure Vessel



Type YSF-3



Type YSF-4

## ■ Features

- Simple structure and outstanding performance.
- Superb performance, followed by strict quality control procedure.
- High impact resistance and good abrasion resistance : The disc and seat are stainless steel welded with satellite.
- Test lever attached : Periodical performance inspections can be conducted.
- Approval from the Korea Occupational Safety and Health Agency (KOSHA).

## ■ Specifications

Type	YSF-3(Close Bonnet)	YSF-4
Test lever	Yes	Optional
Applicable fluid	Steam, air	Liquid
Set pressure range	1~10kgf/cm <sup>2</sup> g, 10~20kgf/cm <sup>2</sup> g, 20~30kgf/cm <sup>2</sup> g	
Fluid temperature	220° C below	220° C below
End connection	Inlet	KS B 6216 10, 20, 30K RF FLANGE
	Outlet	KS B 1511 10K FF FLANGE
Material	Body	SCPH2
	Disc, seat	STS (Stellite welding)
Hydraulic test pressure	1.5 times of applicable flange rating	

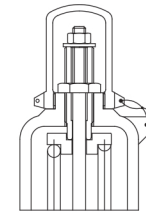
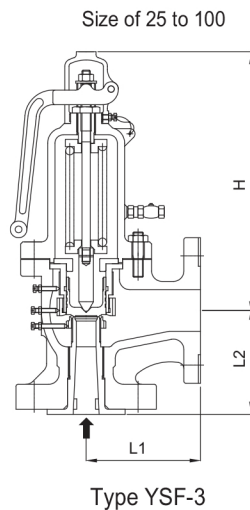
▶ The JIS and ANSI flanges are available by made-to-orders.

## ■ Dimensions

(mm)

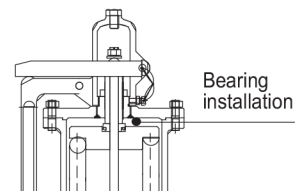
Size Inlet X Outlet	Seat diameter Ds	Throat diameter dt	Throat area a(mm <sup>2</sup> )	Lift ℓ	Face to Face		Height(h)		Weight(kg)	
					L1	L2	YSF-3	YSF-4	YSF-3	YSF-4
25(1")X40(1½")	22	19	283.5	5.0	115	100	249	264	13	12.4
40(1½")X65(2½")	35	30	706.8	7.5	130	125	340	316	25	14
50(2")X80(3")	45	38	1134.1	9.5	141	135	380	380	35.6	34.4
65(2½")X100(4")	58	49	1885.7	12.5	161	160	480	480	57	55.8
80(3")X125(5")	71	61	2922.5	15.5	179	180	535	535	79	77.2
100(4")X150(6")	88	76	4536.5	19.0	209	205	668	668	132	129
125(5")X200(8")	111	95	7088.2	24.0	232	240	846	828	273	269.5
150(6")X200(8")	134	115	10386.9	29.0	262	250	935	916	325	320
200(8")X250(10")	176	152	18145.8	38.0	355	300	1115	1135	645	633

## ■ Dimensional drawing



Type YSF-4

Size of 125 to 200



Type YSF-3